



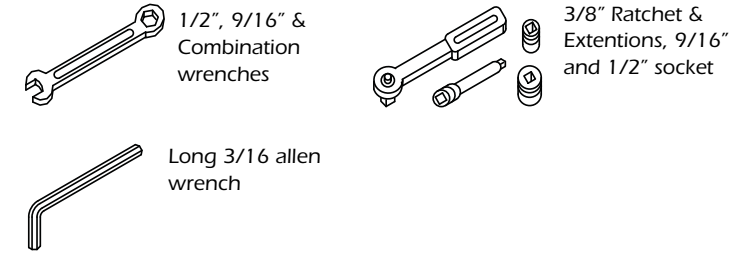
MORE POWER : LESS NOISE



Congratulations, you have purchased the finest exhaust system for your motorcycle on the market. Your Vance & Hines exhaust system is designed and crafted for maximum performance, a perfect fit, a great sound and unbeatable style. Please follow the installation instructions below and if you have any questions, please call our technical support line at (562) 926-5291.

Attention installer (if other than owner), please forward this instruction sheet to the owner of this product. These instructions contain valuable information to the end user.

TOOLS REQUIRED



READ ALL INSTRUCTIONS BEFORE BEGINNING INSTALLATION

STOCK EXHAUST SYSTEM REMOVAL

1. Refer to owners manual for proper bike hoisting positions and techniques.
2. Loosen the clamps on the front of your stock mufflers.
3. Using a half inch combination wrench, remove the four 5/16 bolts securing the mufflers to the stock hangers.
4. Remove the stock mufflers by sliding them back off the stock headers.
 (NOTE) It may be necessary to use penetrating lubricant.

FIGURE 1

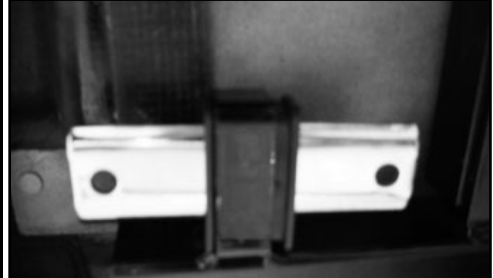


FIGURE 2

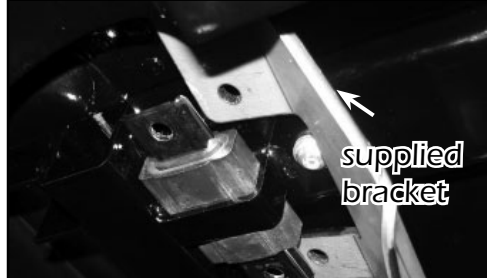


FIGURE 3



FIGURE 4



FIGURE 5



FIGURE 6



VANCE & HINES EXHAUST SYSTEM INSTALLATION

PACKING LIST

1. Make sure the stock hanger is centered in the rubber mount. (Figure 1)
2. The new supplied bracket may be put into position on top of the stock hanger by fitting through the opening between the front of the stock hanger and the frame. (Figure 2)
3. Four spacers part # A310HW are supplied to fill the gap at all four corners between the supplied bracket and the stock hanger. (Figure 3)
4. The supplied 5/16 x 3/4" bolts will be installed from bottom up through the the hangers into the supplied bracket with no washer for maximum clearance. (Figure 4)
5. Install 5/16" locknuts and tighten hanger bolts.
6. Install Torca clamps onto inlet side of left and right muffler bodies. Mount muffler bodies to supplied bracket using supplied 5/16 x 5/8 bolts and nut plates and leave loose at this time (Figure 6).
7. Adjust muffler bodies at the mounting points to gain the desired 3/8" clearance between the tips and body and tighten all bolts. (Figure 5)
8. It may be necessary to adjust the end tips rotation for proper alignment (Main Photo). Tighten all bolts securely at this time.

EXHAUST CARE - HELPFUL HINTS TO AVOID DISCOLORATION OF EXHAUST SYSTEM

1. When installing a new set of chrome pipes, make sure your hands are clean and free of oil. After installation, thoroughly clean pipes with a soft cloth and cleaning solvent that will leave no residue (chrome wax / polish, glass cleaner, alcohol, ammonia, etc...) before starting the motorcycle.
2. Avoid long periods of idling as this can cause discoloration.
3. Intake leaks can cause the engine to run lean and overheat, this could lead to discoloration.
4. Make sure there are no exhaust leaks at the junction of the exhaust pipes and cylinder head. We recommend replacing gaskets if they are worn.

VANCE & HINES OPTIONAL ACCESSORIES

FUELPAK



FUEL MANAGEMENT:
 Take the guess work out of fuel injection with Fuelpak Fuel Management. Contact your local dealer or call (562) 921-0071 to order. Visit fuelpakfi.com for more information. Fuelpak is intended for racing or off-highway use only, and is not legal for sale or use in California on pollution-controlled vehicles.

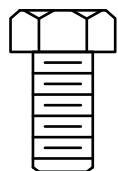
May be used with V&H header systems listed.

- 16749 True Duals
- 16759 Power Duals

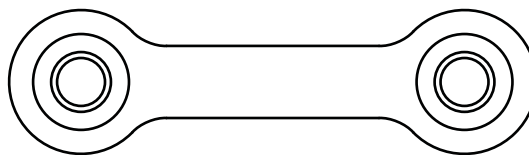
PLEASE NOTE: Every effort is made for Vance & Hines Exhaust Systems to provide improved cornering clearance. However, due to design and space limitations on some motorcycle models, ground and cornering clearance may not be improved and in some cases may be reduced. Be sure to follow proper installation instructions.



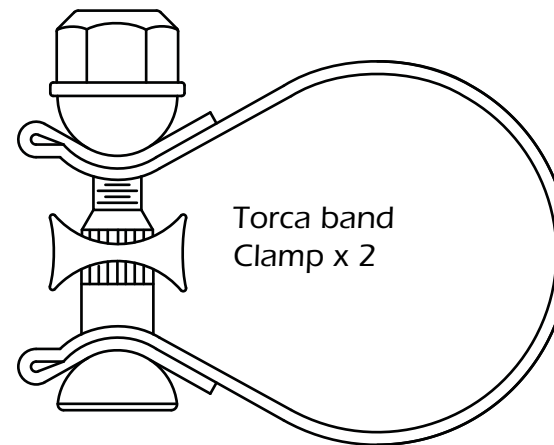
PACKING LIST



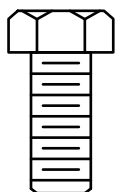
5/16 x 5/8
Hex bolts x 4



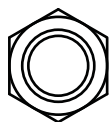
Nutplate x 2



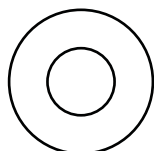
Torca band
Clamp x 2



5/16 x 3/4
Hex bolts x 4



5/16 Locknut x 4



A310HW Spacer x 4

PARTS NOT SHOWN:

D257RC
697-P

Right/Left hand muffler x2
Bracket

MORE POWER : LESS NOISE

ALL PARTS SHOWN ARE ACTUAL SIZE

WARRANTY

Vance & Hines exhaust systems are warranted against defects in material and workmanship for a period of 90 days from the date of purchase from an authorized dealer. This warranty does not cover discoloration of chrome finishes. This warranty is limited to the repair or replacement of a product proven to be defective from normal use. Vance & Hines exhaust systems are designed to fit and operate on OEM motor and chassis. This warranty does not cover any product subject to abuse, misuse, improper installation or modification.

FUEL MANAGEMENT

GET THE MOST OUT OF YOUR RIDING EXPERIENCE...

AN AFTERMARKET EXHAUST SYSTEM IS ONLY YOUR FIRST STEP, NOW YOU NEED FUEL MANAGEMENT.

NOW YOU NEED FUELPAK.

Your fuel injected Harley-Davidson® is equipped with an ECU (electronic control unit) that's programmed to deliver fuel to the motor based on an air/fuel ratio for a stock air filter and stock exhaust system. When you install a performance exhaust system, your airflow changes, so you need a fuel management system that adjusts your air/fuel ratio to match the changes. That fuel management system is Fuelpak. Fuelpak adds and takes away fuel, allowing for a more precise range of refinement in your air/fuel ratio. Get the perfect fuel management combination with your Vance & Hines exhaust system, get Fuelpak. For more information visit the tuning center at fuelpakfi.com

NOTICE: Fuelpak is intended for racing or off-highway use only, and is not legal for sale or use in California on pollution-controlled vehicles.



MORE POWER : LESS NOISE

13861 ROSECRANS AVENUE / SANTA FE SPRINGS, CA 90670
SALES: (562) 921-5388 / TECHNICAL: (562) 926-5291 / FAX: (562) 802-0110
VANCEANDHINES.COM

WARRANTY

Vance & Hines exhaust systems are warranted against defects in material and workmanship for a period of 90 days from the date of purchase from an authorized dealer. This warranty does not cover discoloration of chrome finishes. This warranty is limited to the repair or replacement of a product proven to be defective from normal use. Vance & Hines exhaust systems are designed to fit and operate on OEM motor and chassis. This warranty does not cover any product subject to abuse, misuse, improper installation or modification.